



XSCACE

Collection 2024

NEW COLLECTION 2024

www.xscace.com

XSCACE

About us

Lorem ipsum dolor sit amet, consectetur adipiscing elit. Maecenas et placerat velit. Nam vitae dictum orci. Phasellus vehicula metus in libero euismod pretium. Vestibulum a dui a lorem pharetra sollicitudin. Vestibulum non dictum velit. Proin venenatis dictum nibh mollis dignissim. Vestibulum hendrerit tempor urna ac tristique. Maecenas vitae urna sapien.

PROPRIETARY TECH



Collection 2024

www.xscace.com

XSCACE



QUADCANE

Slim Array

Introducing the XSCACE QuadCane, a revolutionary speaker that defies convention. This slim and towering marvel boasts aerospace-grade aluminium construction for strength and beauty. Inside, our proprietary technology, including Nano Resonance and PrecisionXover Array, delivers unparalleled sound power. QuadCane: Where thin meets thunderous.

www.xscace.com



QUADCANE

Headling & Finishes

Power	100 W
Dimensions WxHxD	H: 25.82, W: 1.69, D: 0.82 Inches
Woofer	16 X Neodymium Woofers
Impedance	8 Ohms
Sensitivity	92 ± 3 dB
Frequency	200Hz - 20KHz ± 3dB
Weight	0.8 Kg
Housing Material	Aluminium

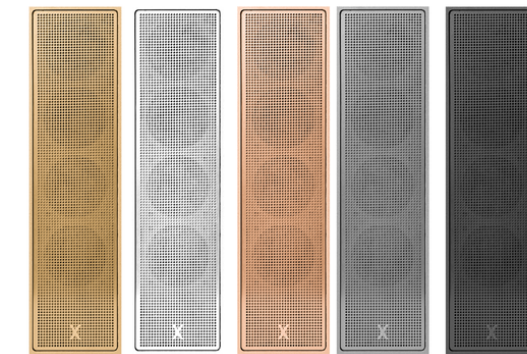


CANE



Slim Array

Though compact, Cane defies expectations with its petite frame. This slender array speaker wields a formidable 60W power, producing an astonishing sound. Its sleek design seamlessly integrates into any environment. Delivering full-range sound, Cane ensures an immersive listening experience like no other.



CUSTOM RAL



CANE

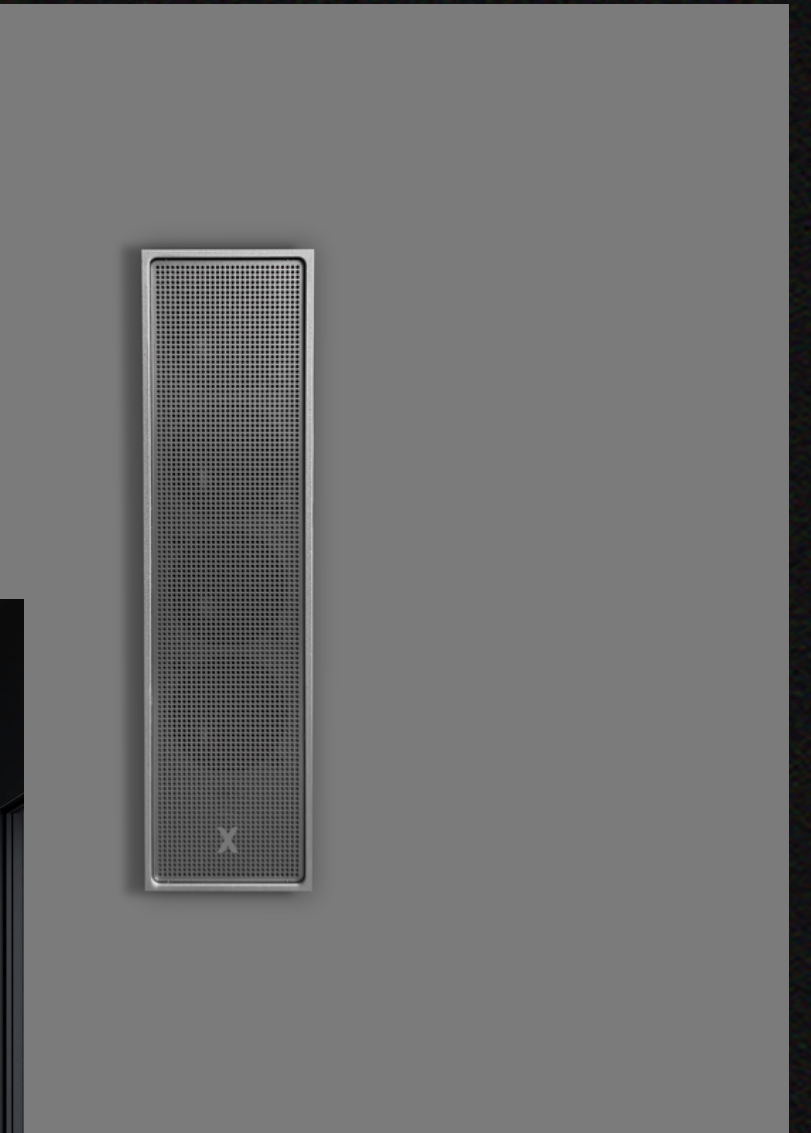


Headling & Finishes

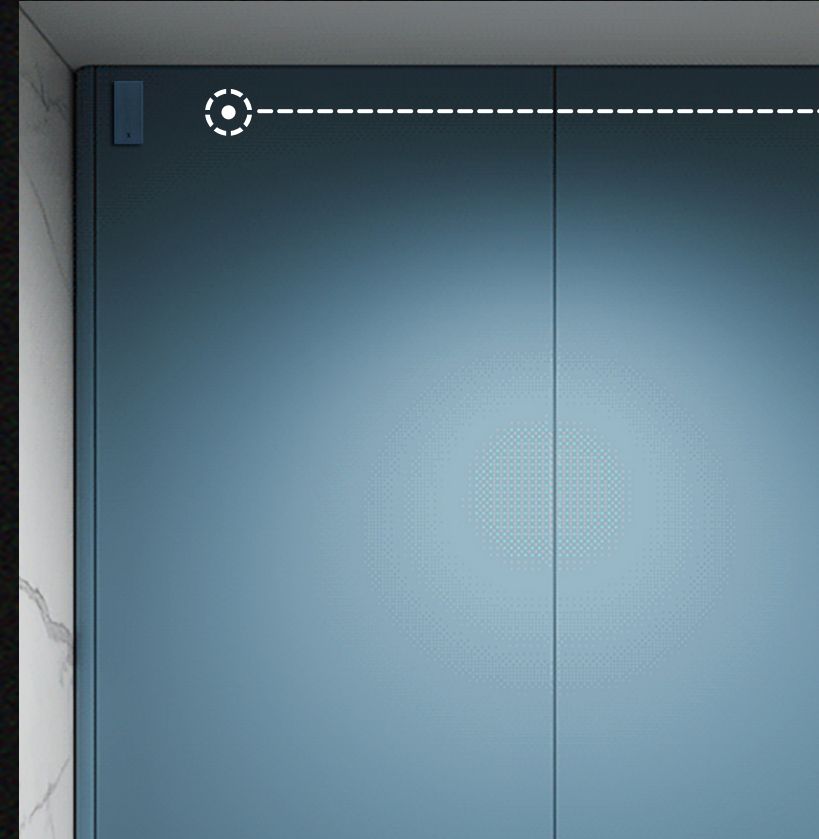
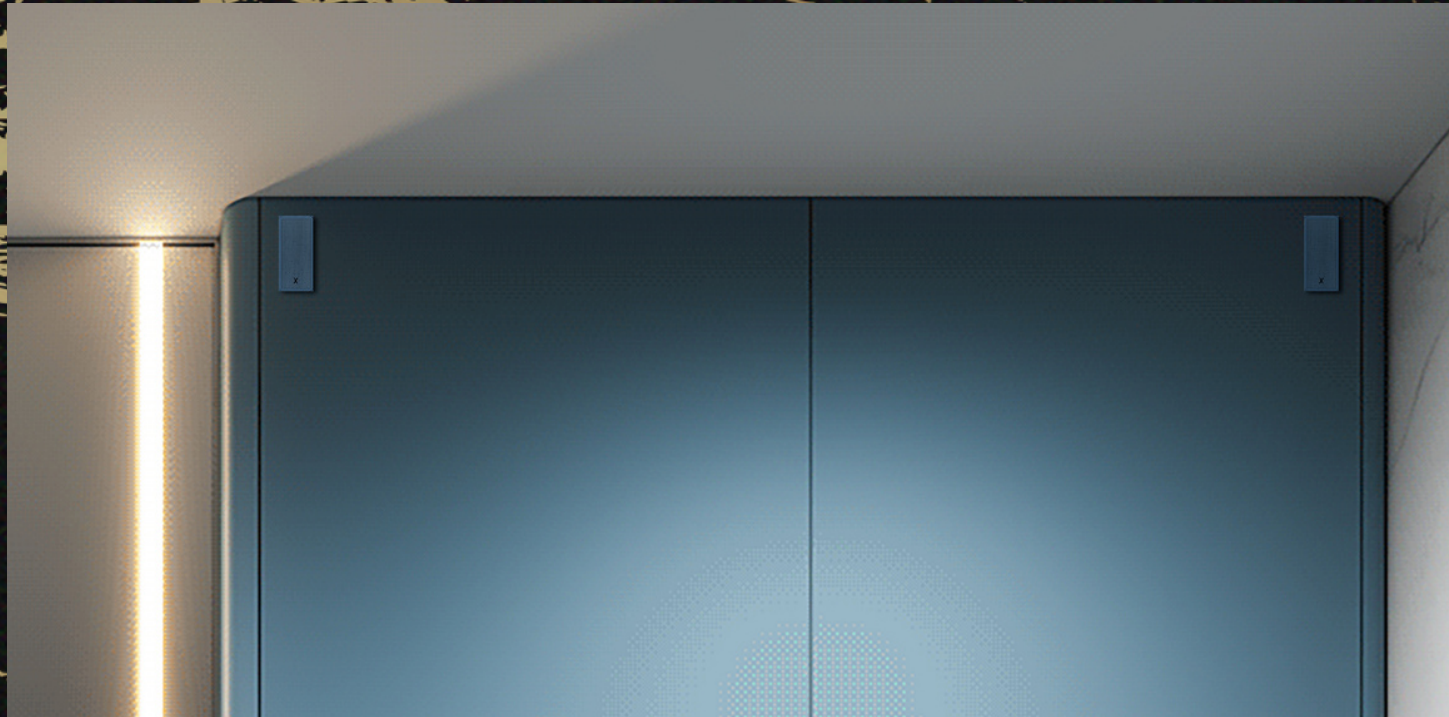
Power	60 W
Dimensions WxHxD	H: 6.29, W: 1.69, D: 0.94 Inches
Woofers	4 X 1.25" Neodymium Woofers, Rubber Edge
Impedance	8 Ohms
Sensitivity	92 ± 3 dB
Frequency	200Hz - 20KHz ± 3dB
Weight	0.20 Kg
Housing Material	Aluminium



Lorem ipsum dolor sit amet, consectetur adipiscing elit. Maecenas et placerat velit. Nam vitae dictum orci. Phasellus vehicula metus in libero euismod pretium. Vestibulum a dui a lorem pharetra sollicitudin. Vestibulum non dictum velit.



XSCACE



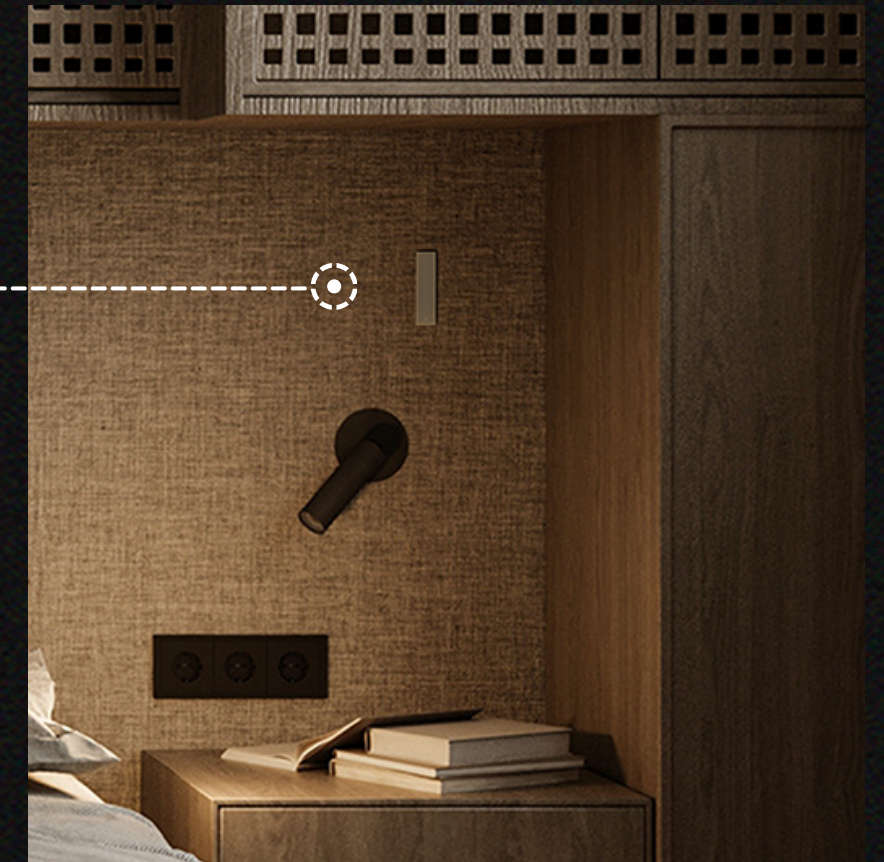
BONSAI +

Don't let the size fool you. the epitome of elegance and power. This slim array speaker boasts 70W of rich, immersive sound and a sleek, customizable design that blends seamlessly with any modern space

BONSAI

Bonsai speaker, the compact yet powerful audio solution, crafted with precision and customizable colors to match any interior design.

CAN BE MADE IN CUSTOM RAL

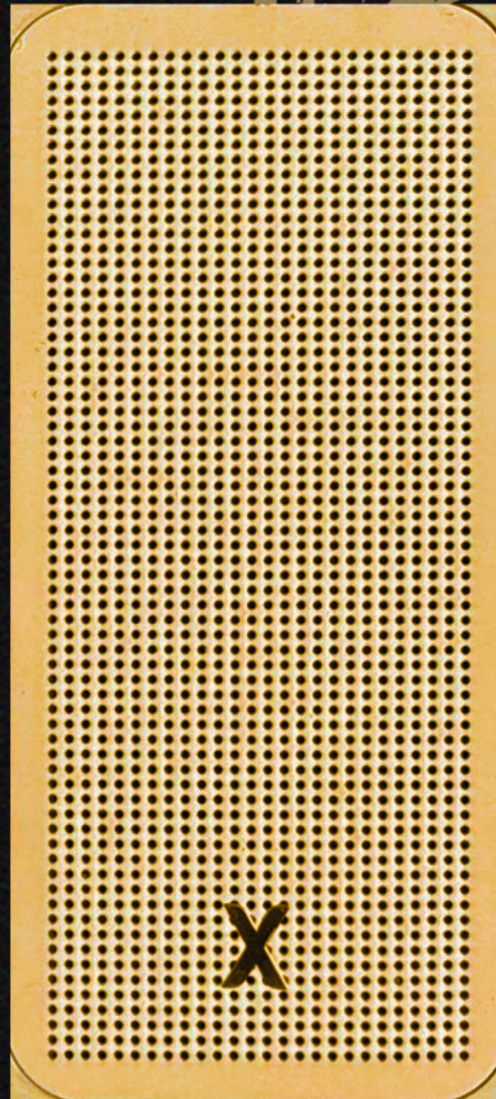


BONSAI+



Headling & Finishes

Power	45 W
Dimensions WxHxD	H: 3.48, W: 1.67, D: 0.71 Inches
Woofers	Neodymium Woofer, Rubber Edge
Impedance	8 Ohms
Sensitivity	92 ± 3 dB
Frequency	200Hz - 20KHz ± 3dB
Weight	0.1 Kg
Housing Material	Aluminium

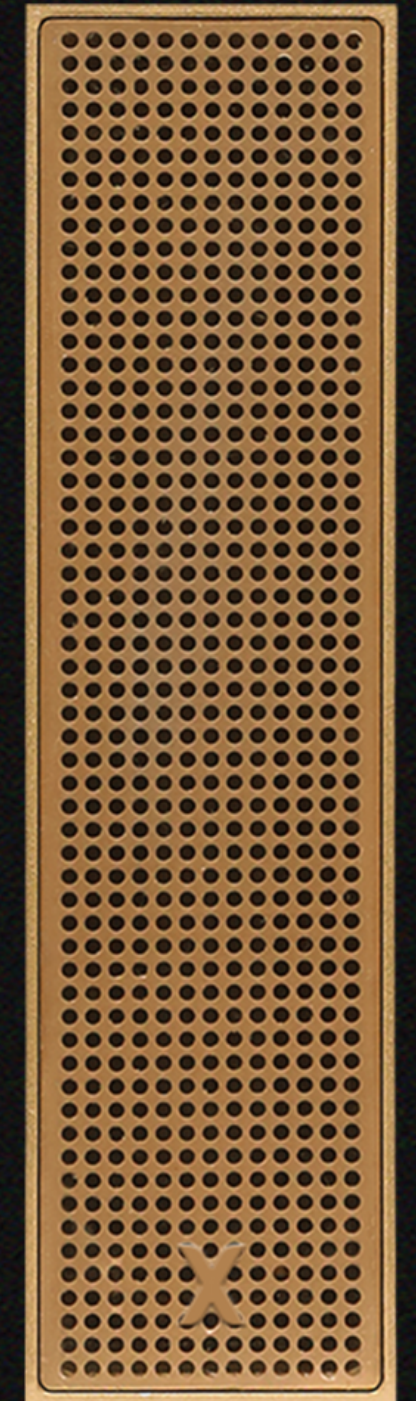


BONSAI



Headling & Finishes

Power	35 W
Dimensions WxHxD	H: 3.68, W: 0.76, D: 0.59 Inches
Woofers	Dual Neodymium Woofer, Rubber Edge
Impedance	6 Ohms
Sensitivity	88 ± 3 dB
Frequency	200Hz - 20KHz ± 3dB
Weight	0.1 Kg
Housing Material	Aero Space Aluminium





XSCACE

www.xscace.com